

Job Name: _____

Job Location: _____

Engineer: _____

Engineer Approval: _____

Contractor: _____

Contractor Approval: _____

Contractor P.O.: _____

Representative: _____

MODEL RSC-900-AW

TYPICAL INSTALLATIONS INCLUDE:

- Common-risk housing – condos and apartments
- Commercial office suites
- New and retrofit construction
- Vacation homes and other unattended properties

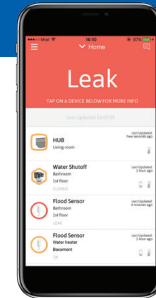
HIGHLY RECOMMENDED FOR:

- Multi-unit residential complexes
- Commercial office buildings
- Medical and assisted living facilities
- Any facility with a history of insurance claims for water damage

FEATURES:

- Mobile app provides automatic notifications and remote user interface, including manual valve shut-off
- Addressable sensors with high/low temperature alerts
- Full port valve sizes 1/2" to 1-1/4" dia.
- Supports multiple actuators for both hot and cold water lines
- IP68-rated actuator for indoor/outdoor use
- Available without shut-off valve/actuator for applications where you do not wish to interrupt the water flow
- Operates via wireless system network
- App supports creation of multiple "Zones" to monitor/control designated areas or plumbing subsections within a single system
- Hub supports up to 64 total wireless devices; max. 4 wireless signal repeaters

Communications Hub
(Ethernet model shown)



RSC-900 Mobile App

Wireless Actuator



Shut-Off Valve



Wireless Water Sensors



APPLICATION CONSIDERATIONS:

The RSC-900 is a complete wireless, app-based system for managing indoor plumbing leaks, protecting properties and reducing financial losses. If the sensor detects a leak, it signals the valve to shut off and sends its location, alarm type and valve status back to the hub. The hub sends notifications to the user via the app. Fault notifications and status check-ins are communicated through the app from any Internet-enabled device. The system is also available without a shut-off valve and actuator for applications where interrupting the water flow is either not required or not desirable (order model RSC-900-W).

INSTALLATION OVERVIEW:

Hub: Choose between Wi-Fi or Ethernet connectivity.

Actuator(s): Install within 200' of the hub*, on the main water feed line to the protected area. Multiple actuators can be installed where both hot and cold feed line control is required.

Water Flood Sensors: Install within 200' of the hub*, in areas where water from a leak is most likely to first accumulate.

* Repeater(s) may be used to extend range between hub and accessory (+200' max.).

App: Free download available for iOS or Android smart phones at the App Store or Google Play. Required for initial system installation and set-up.

Central Monitoring: Optional cloud-based central monitoring allows multiple system viewing from one screen. Great for commercial multi-unit applications. Contact RDT for additional information – 888-771-4929 or info@reliancedetection.com.



Hub and sensors are for interior use only. Actuator is IP68 rated for indoor or outdoor use. Do not install any components inside a metal cabinet.

RSC-900-AW TECHNICAL SUBMITTAL DATA SHEET

ORDERING INFORMATION:

| Valve | Hub | P/N | UPC |
|--------|------|-----------------------|--------------|
| 1/2" | Eth. | RSC-900-AW-1/2 | 811475030078 |
| 1/2" | WiFi | RSC-900-AW-WIFI-1/2 | 811475030276 |
| 3/4" | Eth. | RSC-900-AW-3/4 | 811475030085 |
| 3/4" | WiFi | RSC-900-AW-WIFI-3/4 | 811475030283 |
| 1" | Eth. | RSC-900-AW-1 | 811475030092 |
| 1" | WiFi | RSC-900-AW-WIFI-1 | 811475030269 |
| 1-1/4" | Eth. | RSC-900-AW-1-1/4 | 811475030108 |
| 1-1/4" | WiFi | RSC-900-AW-WIFI-1-1/4 | 811475030290 |
| None | Eth. | RSC-900-W | 811475030177 |
| None | WiFi | RSC-900-W-WIFI | 811475030252 |

OPERATING SPECIFICATIONS:

See charts at right for further detail.

Valve

Pressure Rating600 WOG - 150 WSP
Max. Temperature.....366°F

Actuator

Max. Pressure80 PSI

Sensor

Audible AlarmYes

MATERIALS:

Valve

Body, Stem, End Connection.... Low-lead brass
End Connection Low-lead brass
Ball Low-lead brass
(tea coated)
Ball Seats..... PTFE
O-Rings FKM (Viton®)

CABLE LENGTHS:

Hub Power Cord 5'
Ethernet Cable..... 4' (Ethernet hub models)

APPROVALS:

| Certifications: | FCC | IC |
|-----------------|----------------|-----------------|
| Flood Sensor | 2AFOICLMFLD10 | 20798-CLMFLD10 |
| Hub | 2AFOICLMCTRL10 | 20798-CLMCTRL10 |
| Actuator | 2AFOICLMASOU20 | 20798-CLMASOU20 |

RSC-900 Wireless System FCC & Industry Canada Info

This device complies with Part 15 of the FCC Rules. Operation is subject to the following two conditions: (1) this device may not cause harmful interference, and (2) this device must accept any interference received, including interference that may cause undesired operation.

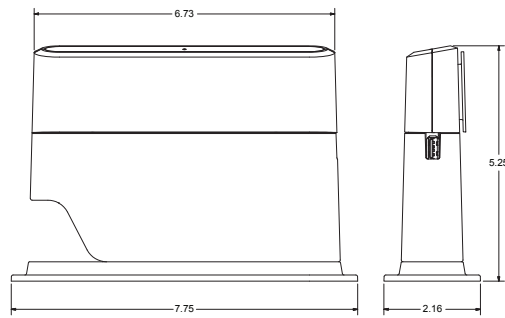
Communication Hub: IP Rating IEC60529

Valve/Actuator: IP Rating IEC60529; IP68;
ANSI 61/372 (Valve)

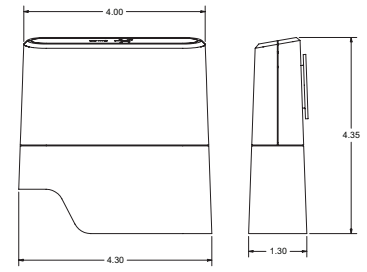
MA Board of Registration of Plumbers Approval -
Code # P1-1018-40 (System)

DIMENSIONS & WEIGHTS:

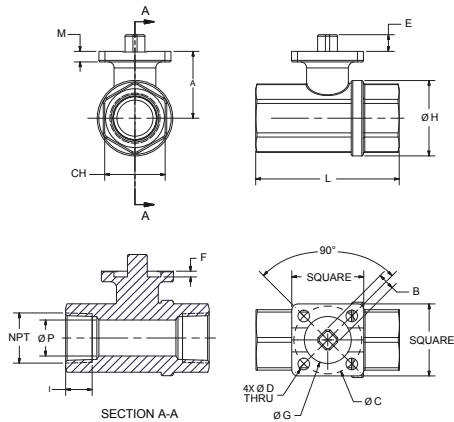
Communications Hub (Ethernet) ⬇



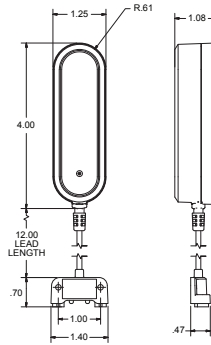
Communications Hub (Wi-Fi) ⬇



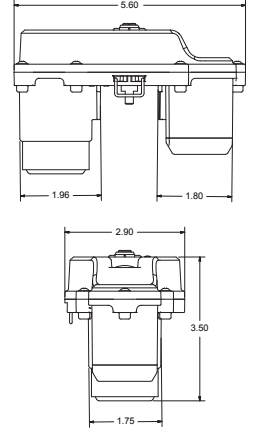
Shut-Off Valve ⬇



Wireless Sensor ⬇



Wireless Actuator ⬇



RSC-900 Shut-Off Valve Specifications

| Size | Square | A | B | C | D | E | F | G | H | I | L | CH | M | P | CV | PSI | LBS | IN-LBS |
|--------|--------|------|------|----------------|------|------|------|------|------|------|------|------|------|------|--------|-----|------|--------|
| 1/2" | 1.50 | 1.28 | 0.35 | 1.42 (ISO F03) | 0.24 | 0.35 | 0.08 | 0.98 | 1.32 | 0.59 | 2.64 | 1.06 | 0.22 | 0.56 | 18.84 | 580 | 0.21 | 53.10 |
| 3/4" | 1.50 | 1.36 | 0.35 | 1.42 (ISO F03) | 0.24 | 0.35 | 0.08 | 0.98 | 1.57 | 0.64 | 2.99 | 1.26 | 0.22 | 0.75 | 34.10 | 580 | 0.40 | 53.10 |
| 1" | 1.50 | 1.79 | 0.35 | 1.42 (ISO F03) | 0.24 | 0.35 | 0.12 | 0.98 | 1.93 | 0.75 | 3.54 | 1.61 | 0.24 | 0.95 | 49.71 | 580 | 0.75 | 53.10 |
| 1-1/4" | 1.50 | 1.93 | 0.35 | 1.42 (ISO F03) | 0.24 | 0.35 | 0.12 | 0.98 | 2.30 | 0.84 | 4.02 | 1.97 | 0.24 | 1.18 | 102.88 | 580 | 1.05 | 53.10 |

(IN-LBS) TORQUE VALVES ARE MEASURED IN LABORATORY TESTS UNDER THE FOLLOWING CONDITIONS: TEMPERATURE: 68°F; PRESSURE: 0 PSI; FLUID: PURIFIED WATER.

RSC-900 Wireless Component Specifications

| Component | Weight* | Power Supply | Backup Battery | Primary Radio Frequency | Operating Temperature | Communication | Signal Range | Addressable? |
|--------------------------|-----------------|---------------------------------------|------------------|-------------------------|----------------------------------|-------------------|--------------|--------------|
| Communication Hub | ≤ 6 oz (170 gm) | External Adapter Input 110-240V AC | (2) AA batteries | 915 MHz | -4°F to 122°F (-20°C to 50°C) | Wi-Fi or Ethernet | 200' | Yes |
| Wireless Actuator (IP68) | 13 oz (369 gm) | (4) CR123A batteries 2-year life | N/A | 915 MHz | -4°F to 122°F (-20°C to 50°C) | Wireless RF | 200' | Yes |
| Wireless Sensor | 2 oz (57 gm) | (2) AAA batteries 2-year life | N/A | 915 MHz | -4°F to 122°F (-20°C to 50°C) | Wireless RF | 200' | Yes |

* Weight without accessories attached. Hub weight is model dependent.

AVAILABLE ACCESSORIES:

- Extra Wireless Water Flood Sensors (RSC-900-W-001)
- Wireless Rope-Style Water Sensor Kit (RSC-900-W-175)
- Wireless Signal Repeater (RSC-900-X-200) – Max. 4 per system
- Extra Wireless Actuator & Valve (RSC-900-W-310-X)

RDT recommends that RSC-900-AW installations be completed by a licensed plumber to ensure that all local code requirements are followed.



Reliance Detection Technologies, LLC
27 Business Park Drive
Branford, CT 06405

203-488-2684 or 888-771-4929
info@RelianceDetection.com
www.RelianceDetection.com