



# TECHNICAL SUBMITTAL DATA SHEET

## Hose-Fed Appliance Leak Detection & Automatic Shut-Off System

Job Name: \_\_\_\_\_

Job Location: \_\_\_\_\_

Engineer: \_\_\_\_\_

Engineer Approval: \_\_\_\_\_

Contractor: \_\_\_\_\_

Contractor Approval: \_\_\_\_\_

Contractor P.O.: \_\_\_\_\_

Representative: \_\_\_\_\_

### MODEL RS-092

#### TYPICAL INSTALLATIONS INCLUDE:

- Dishwashers, ice makers, and beverage dispensers
- Commercial break rooms
- Residential water treatment and reverse osmosis (RO) systems
- Restaurants and food courts
- Common-risk housing – condos and apartments
- New and retrofit construction

#### HIGHLY RECOMMENDED FOR:

- Commercial office buildings
- Multi-residential complexes
- Academic, institutional and industrial facilities
- Any facility with a history of insurance claims for water damage

#### FEATURES:

- 1/2" full port valve
- Fittings: (1) 3/8" x 1/2" male compression and (1) 3/8" x 1/2" female compression
- Choice of standard wall wart or step-down transformer to power the unit
- Reusable and testable
- Easy reset button
- Snap-fit actuator allows for manual operation of the valve
- Audible alarm (83 dB)
- N/O and N/C dry contacts
- Factory pre-wired



#### APPLICATION CONSIDERATIONS:

Hose-fed appliance failures can happen at any time, often without warning and hidden from view. These leaks can cause substantial flooding and property damage if allowed to run for more than even just a few minutes' time. The RS-092 system is designed to minimize water damage when these leaks occur.

#### INSTALLATION OVERVIEW:

The RS-092 full port valve installs on the hard pipe feed water line between the manual shut-off and the hose line, using the provided 1/2" NPT x 3/8" fittings. Lay the wire rope sensor under the appliance or around the area where water from a leak is most likely to accumulate. When the sensor detects leaking water, an alarm will sound and the valve will automatically shut off the feed water intake to prevent catastrophic water damage.

The RS-092 is available in two electrical supply configurations: standard 120V AC wall wart (MK1) or 120, 208 or 240V AC to 24V AC step-down transformer (MK2). Components come pre-wired. The system can be performance tested anytime; it is resettable via reset button on actuator. Optional dry contact connections (NO/C/NC) are available for fault notification to existing security panel or BMS.

Emergency manual operation of the valve is accomplished by removing the snap-fit actuator and manually changing the valve to open or closed. In the event of a power failure, the valve will remain in position (either open or closed).



203-488-2684 or 888-771-4929  
info@RelianceDetection.com  
[www.RelianceDetection.com](http://www.RelianceDetection.com)

# RS-092 TECHNICAL SUBMITTAL DATA SHEET

## ORDERING INFORMATION:

Valve Size	P/N	UPC
1/2"	RS-092-1/2-MK1	857640005847
1/2"	RS-092-1/2-MK2	857640005854

## POWER SUPPLY:

MK1 ..... 120V AC Wall Wart

MK2 ..... 120, 208 or 240V AC to 24V AC  
Step-Down Transformer

## OPERATING SPECIFICATIONS:

### Valve

Pressure Rating ..... 600 WOG - 150 WSP

Max. Temperature ..... 366°F

Max. Pressure ..... Tested to 80 PSI

### Receiver Box / Actuator

Transformer ..... 120V AC

Voltage ..... 24V AC

Absorbed Current ..... 0.6 A

Absorbed Power ..... 15V A

Frequency ..... 50/60 Hz

Working Temp. .... 0° to 100°F

Square Drive ..... 0.43

Audible Alarm ..... 83 dB

## MATERIALS:

### Valve

Body ..... Low-lead brass

End Connection ... Low-lead brass

Stem ..... Low-lead brass

Ball ..... Low-lead brass  
(tea coated)

Ball Seats ..... PTFE

O-Rings ..... FKM (Viton®)

## CABLE LENGTHS:

Power Cord ..... 12'

Sensor Cable ..... 6' lead wire with 10' of  
sensing cable (extension  
lengths are available)

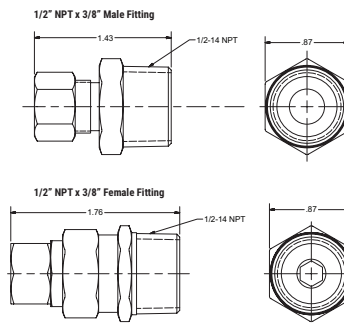
## APPROVALS:

NSF/ANSI 61 and 372 approved valve.

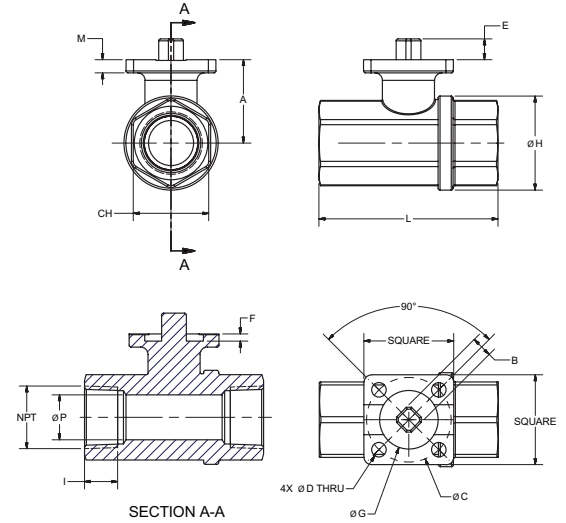
MA Board of Registration of Plumbers  
Approval – Code # P1-0617-575.

## DIMENSIONS & WEIGHTS:

### Compression Fittings



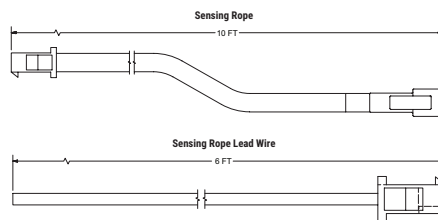
### Shut-Off Valve



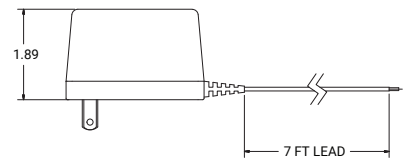
Size	Square	A	B	C	D	E	F	G	H	I	L	CH	M	P	CV	PSI	LBS	IN-LBS
1/2"	1.50	1.28	0.35	1.42 (ISO F03)	0.24	0.35	0.08	0.98	1.32	0.59	2.64	1.06	0.22	0.56	18.84	580	0.21	53.10

(IN-LBS) TORQUE VALVES ARE MEASURED IN LABORATORY TESTS UNDER THE FOLLOWING CONDITIONS: TEMPERATURE: 68°F; PRESSURE: 0 PSI; FLUID: PURIFIED WATER.

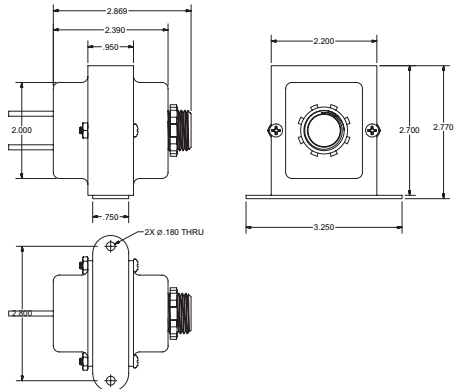
### Wire Rope Sensor



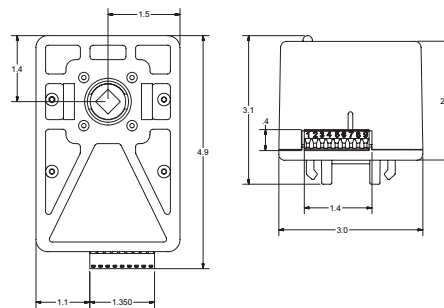
### MK1 Wall Wart



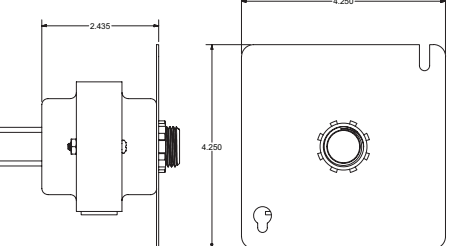
### MK2 Step-Down Transformer



### Receiver Box / Actuator



### MK2 Mounting Plate



## AVAILABLE ACCESSORIES:

- **Wired Sensor Pucks & Sensing Ropes** – Up to 5 additional sensors can be wired to a single RS-092 receiver box.
- **Auto Dialer** – Receive automatic alerts whenever the RS-092 identifies a fault condition.

RDT recommends that installations be completed by a licensed plumber to ensure that all local code requirements are followed.



**Reliance Detection Technologies, LLC**  
27 Business Park Drive  
Branford, CT 06405

203-488-2684 or 888-771-4929  
info@RelianceDetection.com  
[www.Reliandetection.com](http://www.Reliandetection.com)